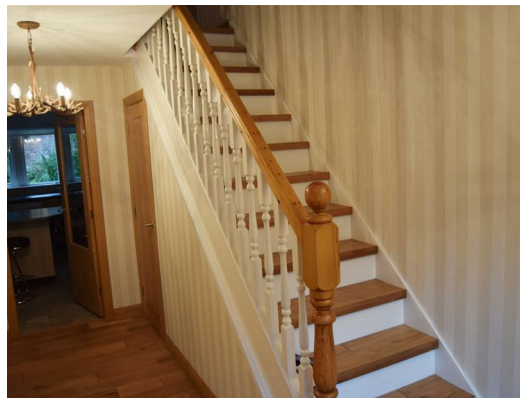




## Salterlee Court, Salterlee, Shibden, Halifax, West Yorkshire, HX3 6XN £2,000 Per Month

\*\*\*AVAILABLE END OF AUGUST 2026\*\*\*

Offered to let is this 5 bedroom executive detached property. Extremely attractive and beautifully appointed home with high quality fittings. Occupying a delightful private setting overlooking fields to the rear in one of Calderdale's most sought after and highly accessible semi rural locations. The property is within easy reach of local amenities and the M62 motorway network. The accommodation on offer briefly comprises: Entrance hall, lounge, dining room, dining kitchen, utility room, cloakroom/WC, 5 bedrooms master bedroom with ensuite and one bedroom currently used as a cinema room, house bathroom to the first floor and large wine loft to the second floor. Externally there are superb private gardens to include 2 roof terraces, decked area and hot tub. Driveway parking for several vehicles and double garage.



EPC RATING - D

COUNCIL TAX BAND - F

